
Project Information

Prepared By: Chuck O'Hara
Project Name: USGS ARRA
Sensor Info: ALS50-II
Required Nominal Pulse Spacing: 1
Vendor Name: Demo Data Vendor
Units: International Feet
Percent of Extent Tolerance: 5
Date of Aquisition: Start: 4/2/2010 Finish: 4/14/2010

Metadata Information

Tile Index:

Path: M:\AA_TOPO\TRICO\INDEX\trico_dem.shp

Number of Polys: 2151

Intensity:

Tile Index Attribute: intensity

Path to Data: M:\AA_TOPO\TRICO\SIS_ADDED\int_tif

Number of Data Files Matching Attribute: 2151 out of 2151

Number of Data Files With Extent Matching Poly-Extent: 2151 out of 2151

DEM:

Tile Index Attribute: location

Path to Data: M:\AA_TOPO\TRICO\SIS_ADDED\dem_tif

Number of Data Files Matching Attribute: 2151 out of 2151

Number of Data Files With Extent Matching Poly-Extent: 2151 out of 2151

LAS:

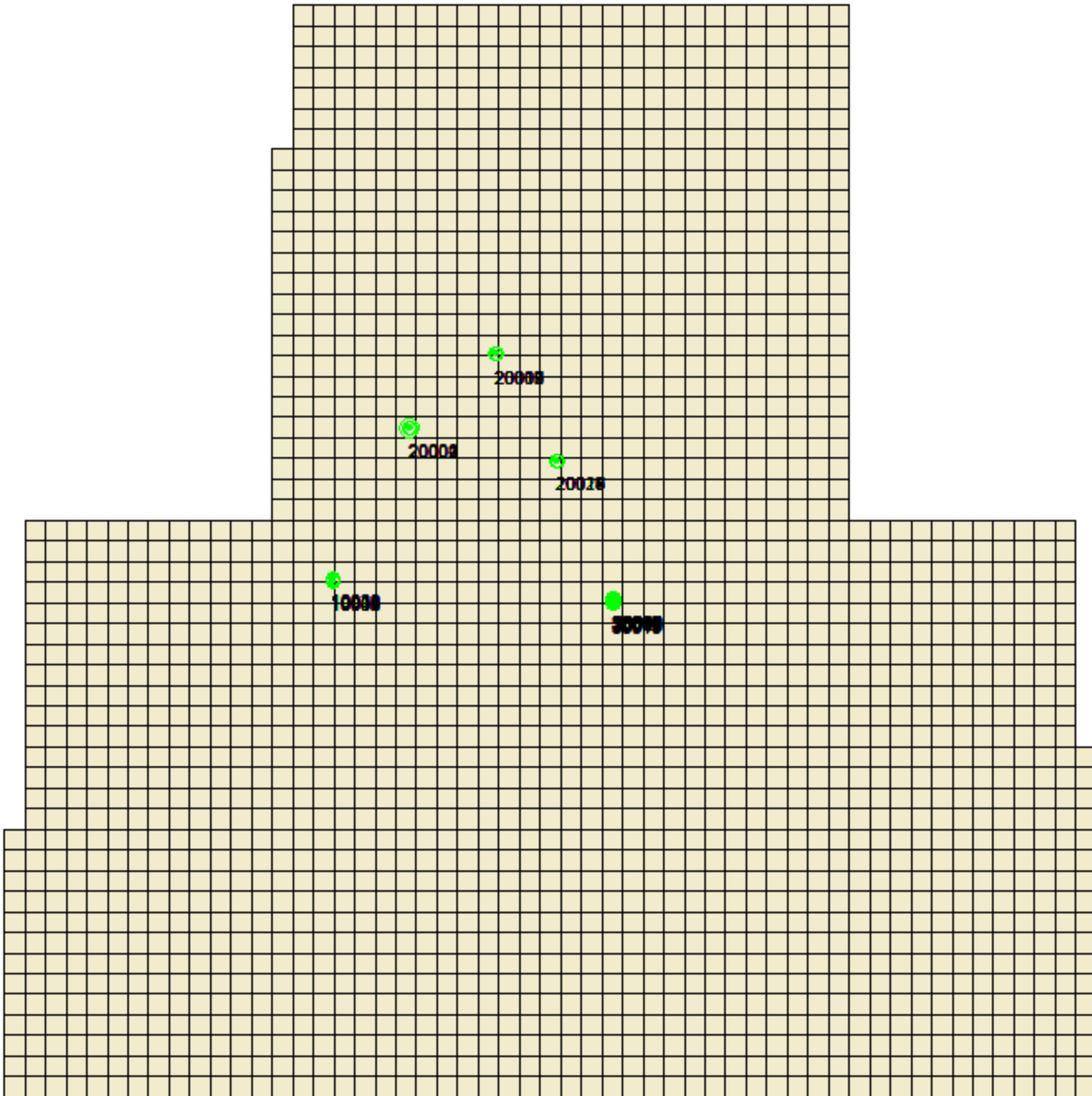
Tile Index Attribute: las

Path to Data: M:\AA_TOPO\TRICO\LAS_TILED\LAS_v1.2

Number of Data Files Matching Attribute: 2151 out of 2151

Number of Data Files With Extent Matching Poly-Extent: 2151 out of 2151

Tiled-Data Area



LiDAR Accuracy Assessment Summary

LC Type	# of Points	FVA	SVA	CVA
LAS				
ALL	64			0.901
BE	24	0.284		
GRASS	17		1.001	
URBAN	23		0.982	
Total	64			
DEM				
ALL	64			0.920
BE	24	0.342		
GRASS	17		0.998	
URBAN	23		0.897	
Total	64			

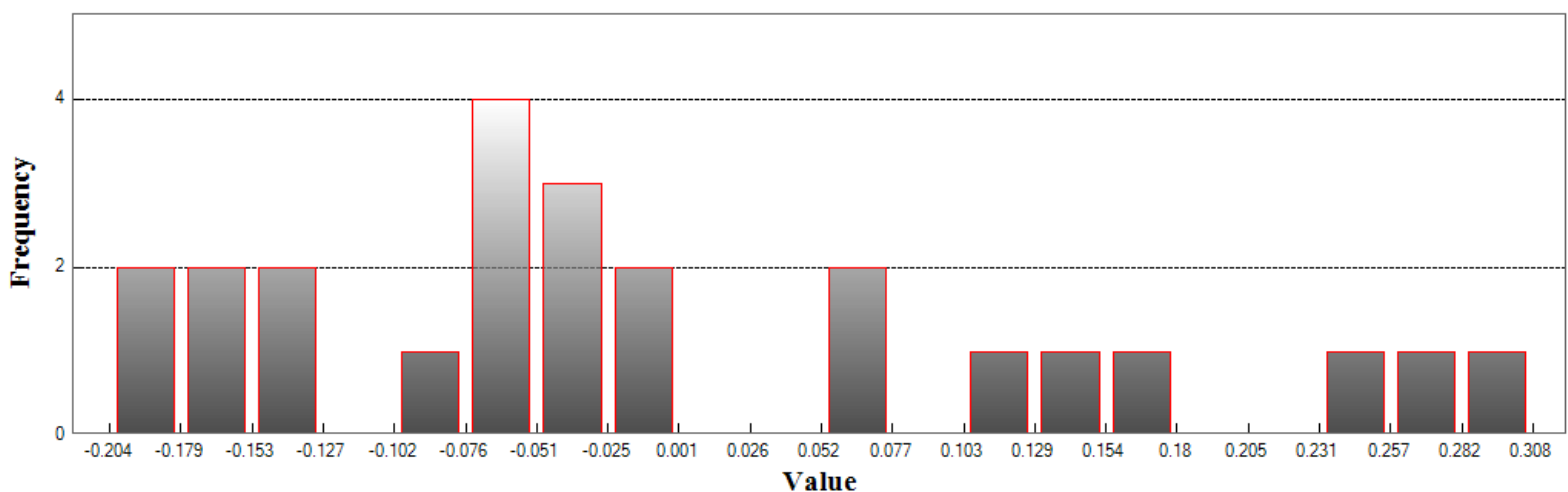
Units: International Feet

LAS

Fundamental Vertical Accuracy

LandCover Type: BE
Minimum DZ: -0.204
Maximum DZ: 0.308
Mean DZ: -0.004
Mean Magnitude DZ: 0.346
Number Observations: 24
Standard Deviation DZ: 0.148
RMSE Z: 0.145
95% Confidence Level Z: 0.284
Units: International Feet

Histogram



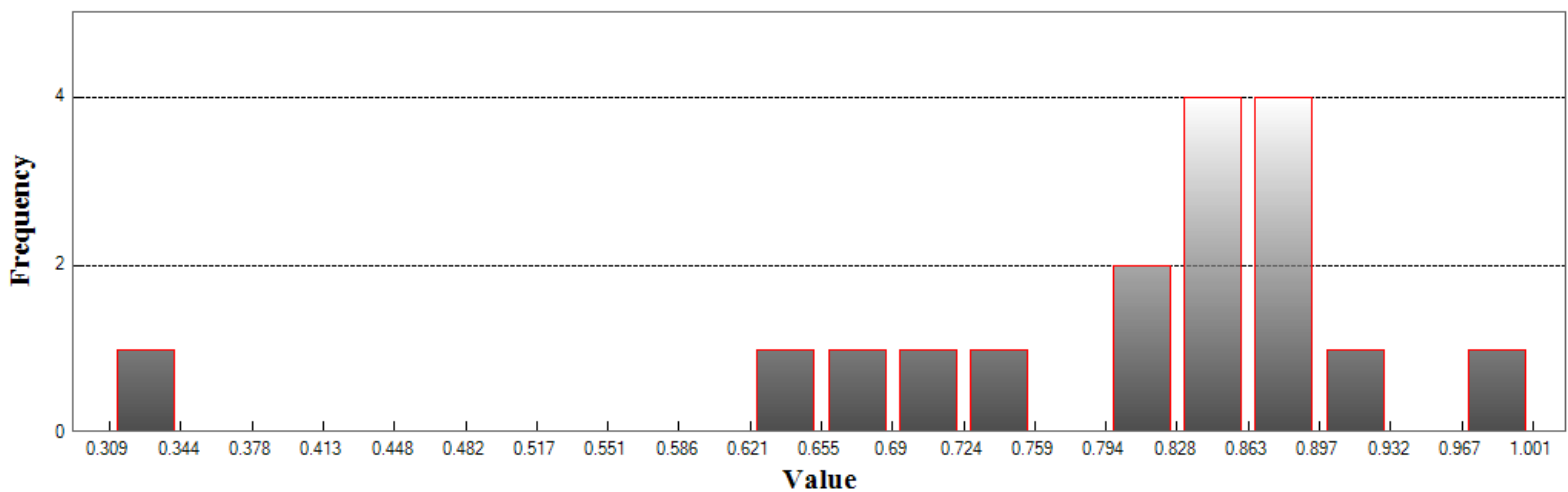
Min: -0.204
Max: 0.308
Number Of Bins: 20
Bin Interval: 0.026

LAS (Continued)

Supplemental Vertical Accuracy

LandCover Type: GRASS
Minimum DZ: 0.309
Maximum DZ: 1.001
Mean DZ: 0.796
Mean Magnitude DZ: 0.892
Number Observations: 17
Standard Deviation DZ: 0.154
RMSE Z: 0.81
95th Percentile: 1.001
Units: International Feet

Histogram



Min: 0.309

Max: 1.001

Number Of Bins: 20

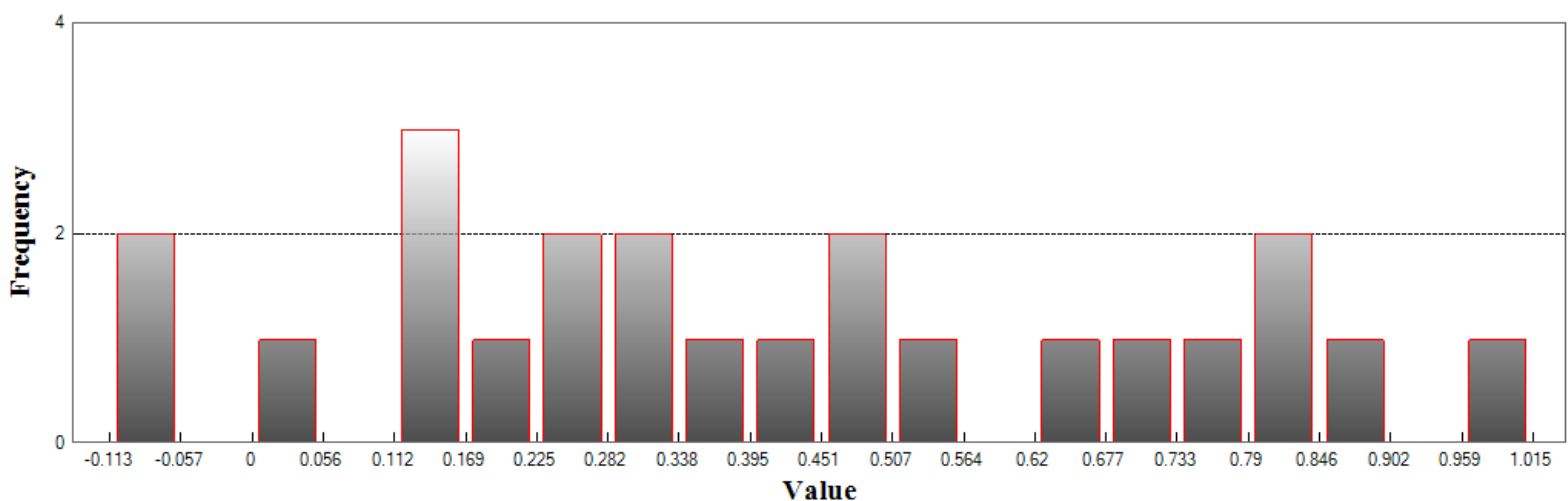
Bin Interval: 0.035

LAS (Continued)

Supplemental Vertical Accuracy

LandCover Type: URBAN
Minimum DZ: -0.113
Maximum DZ: 1.015
Mean DZ: 0.415
Mean Magnitude DZ: 0.656
Number Observations: 23
Standard Deviation DZ: 0.315
RMSE Z: 0.516
95th Percentile: 0.982
Units: International Feet

Histogram



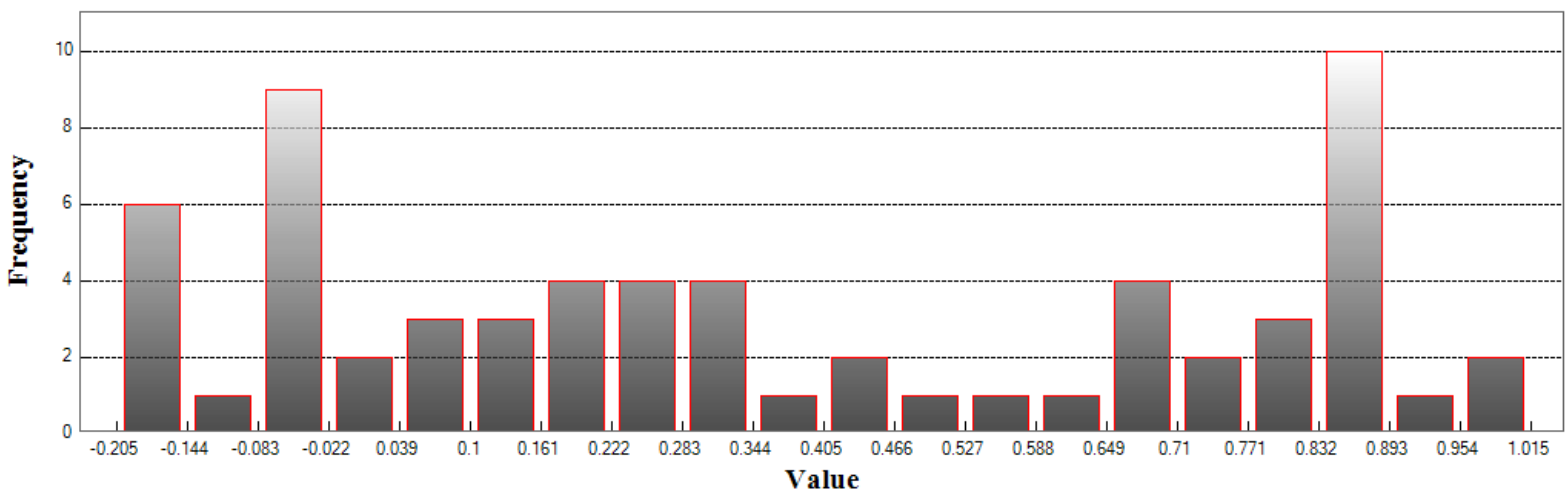
Min: -0.113
Max: 1.015
Number Of Bins: 20
Bin Interval: 0.056

LAS (Continued)

Consolidated Vertical Accuracy

LandCover Type: ALL
Minimum DZ: -0.204
Maximum DZ: 1.015
Mean DZ: 0.359
Mean Magnitude DZ: 0.641
Number Observations: 64
Standard Deviation DZ: 0.389
RMSE Z: 0.527
95th Percentile: 0.901
Units: International Feet

Histogram



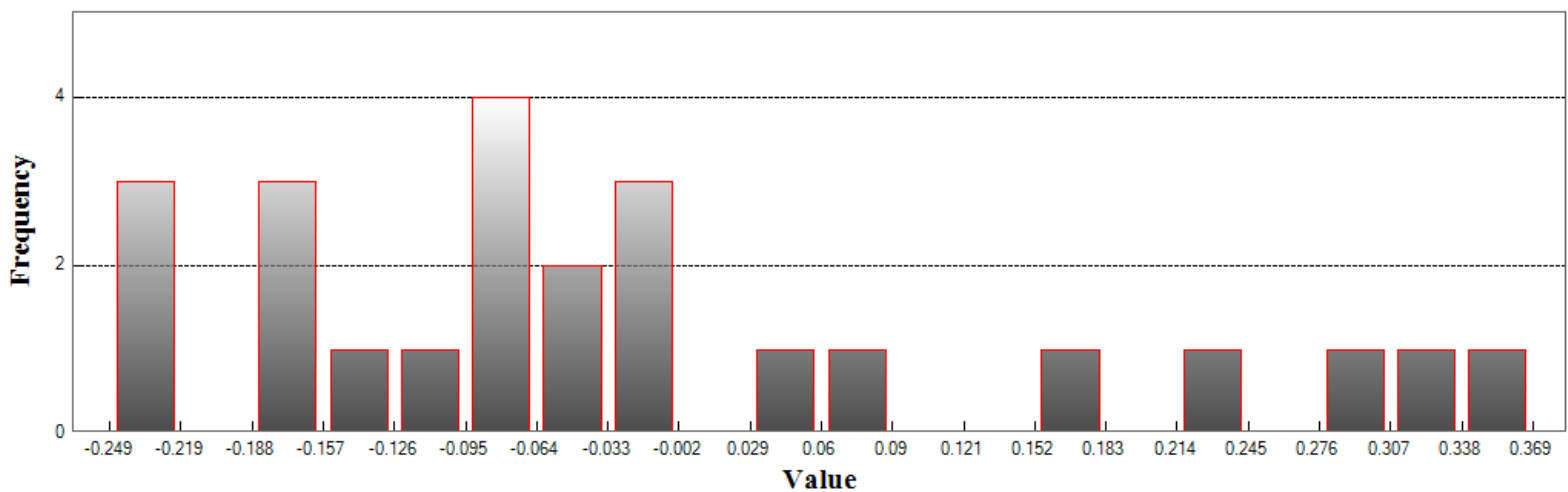
Min: -0.204
Max: 1.015
Number Of Bins: 20
Bin Interval: 0.061

DEM

Fundamental Vertical Accuracy

LandCover Type: BE
Minimum DZ: -0.249
Maximum DZ: 0.369
Mean DZ: -0.02
Mean Magnitude DZ: 0.38
Number Observations: 24
Standard Deviation DZ: 0.177
RMSE Z: 0.175
95% Confidence Level Z: 0.342
Units: International Feet

Histogram



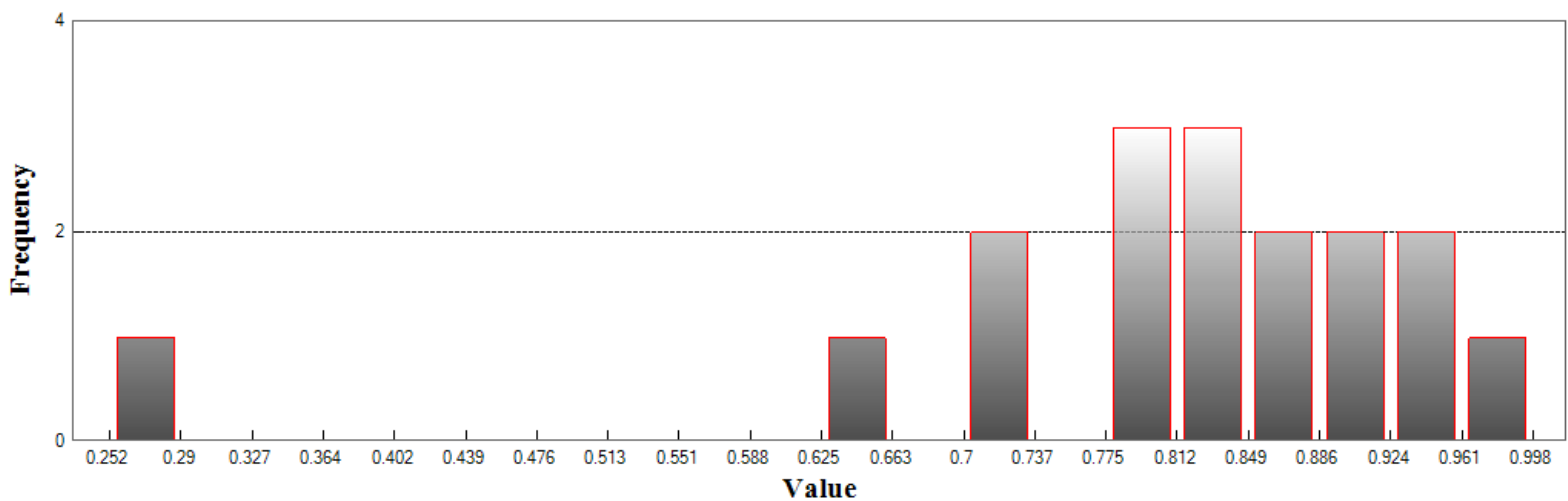
Min: -0.249
Max: 0.369
Number Of Bins: 20
Bin Interval: 0.031

DEM (Continued)

Supplemental Vertical Accuracy

LandCover Type: GRASS
 Minimum DZ: 0.252
 Maximum DZ: 0.998
 Mean DZ: 0.798
 Mean Magnitude DZ: 0.893
 Number Observations: 17
 Standard Deviation DZ: 0.167
 RMSE Z: 0.814
 95th Percentile: 0.998
 Units: International Feet

Histogram



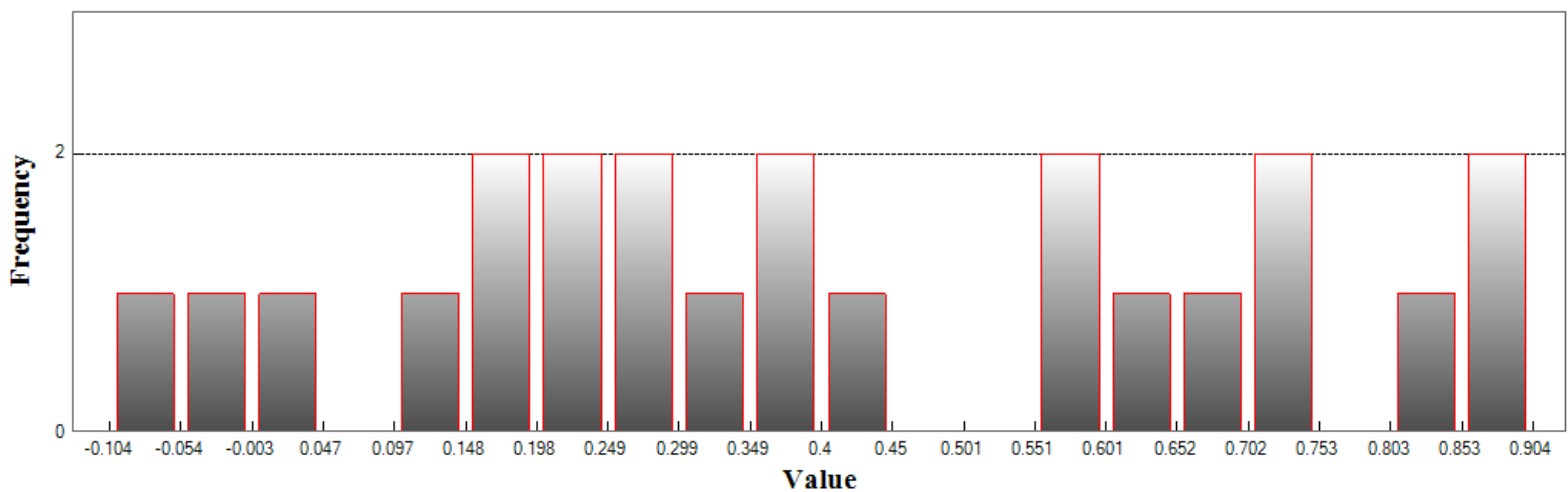
Min: 0.252
 Max: 0.998
 Number Of Bins: 20
 Bin Interval: 0.037

DEM (Continued)

Supplemental Vertical Accuracy

LandCover Type: URBAN
 Minimum DZ: -0.104
 Maximum DZ: 0.904
 Mean DZ: 0.408
 Mean Magnitude DZ: 0.648
 Number Observations: 23
 Standard Deviation DZ: 0.297
 RMSE Z: 0.501
 95th Percentile: 0.897
 Units: International Feet

Histogram



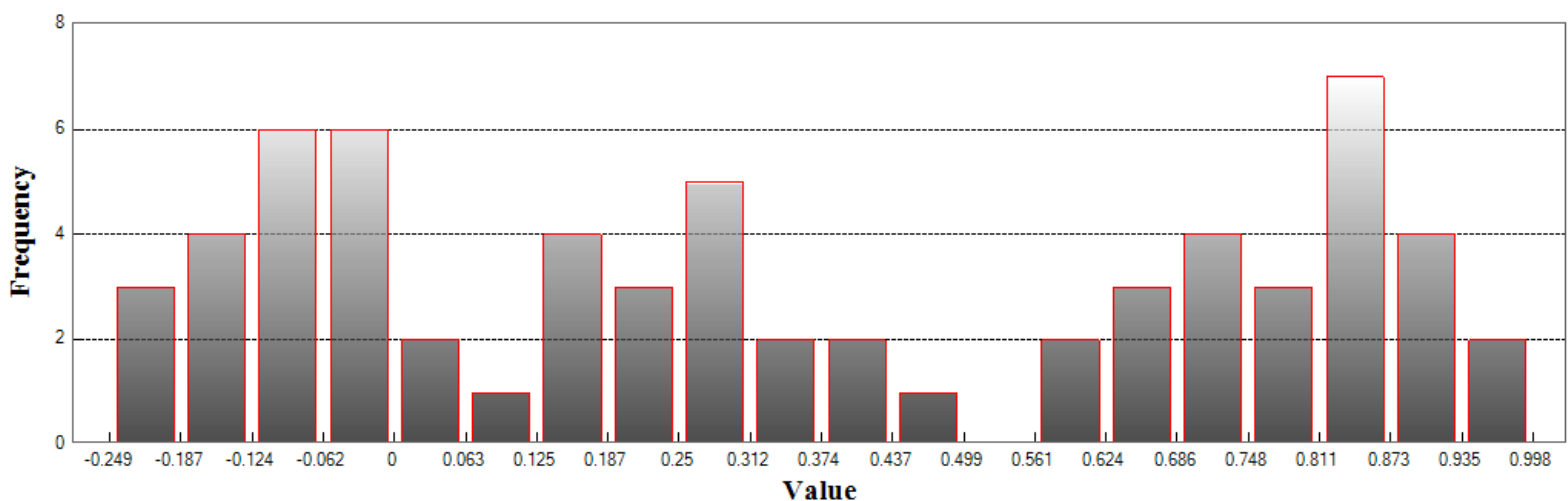
Min: -0.104
 Max: 0.904
 Number Of Bins: 20
 Bin Interval: 0.05

DEM (Continued)

Consolidated Vertical Accuracy

LandCover Type: ALL
 Minimum DZ: -0.249
 Maximum DZ: 0.998
 Mean DZ: 0.351
 Mean Magnitude DZ: 0.646
 Number Observations: 64
 Standard Deviation DZ: 0.396
 RMSE Z: 0.527
 95th Percentile: 0.92
 Units: International Feet

Histogram



Min: -0.249
 Max: 0.998
 Number Of Bins: 20
 Bin Interval: 0.062